

Doubles 2022



Oil Pattern Distance: 41 Feet **Reverse Brush Drop:** 41 Feet **Oil Per Board:** 50 uL
Forward Oil Total: 15.7 mL **Reverse Oil Total:** 7.85 mL **Volume Oil Total:** 23.55 mL
Forward Boards Crossed: 314 Boards **Reverse Boards Crossed:** 157 Boards **Total Boards Crossed:** 471 Boards

Start	Stop	Loads	Speed	Crossed	Start	End	Feet	T.Oil
1	2L 2R	3	14	111	0.0	3.9	3.9	5550
2	9L 9R	2	18	46	3.9	9.0	5.1	2300
3	10L 10R	2	18	42	9.0	14.1	5.1	2100
4	11L 11R	3	18	57	14.1	21.7	7.6	2850
5	13L 13R	3	18	45	21.7	29.3	7.6	2250
6	14L 14R	1	22	13	29.3	32.4	3.1	650
7	2L 2R	0	26	0	32.4	41.0	8.6	0

Forward Reverse More

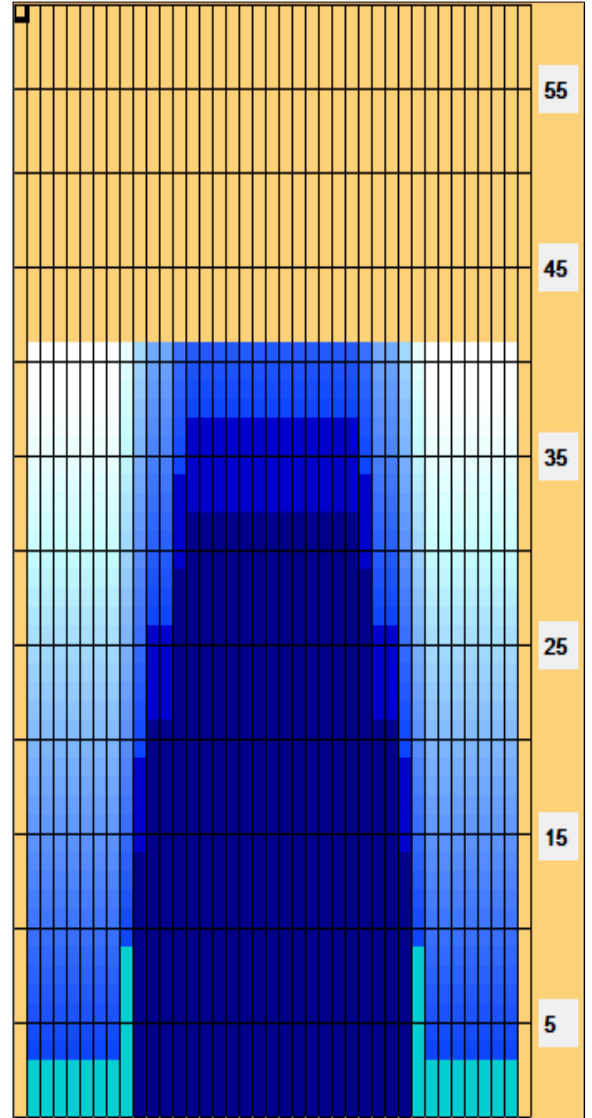
Start	Stop	Loads	Speed	Crossed	Start	End	Feet	T.Oil
1	2L 2R	0	30	0	41.0	37.0	-4.0	0
2	14L 14R	1	22	13	37.0	33.9	-3.1	650
3	13L 13R	3	18	45	33.9	26.3	-7.6	2250
4	11L 11R	3	18	57	26.3	18.7	-7.6	2850
5	10L 10R	2	14	42	18.7	14.8	-3.9	2100
6	2L 2R	0	10	0	14.8	0.0	-14.8	0

Forward Reverse More

Conditioner:
Type In or Select One

TransferType:
Type In or Select One

- Forward
- Reverse
- Combined
- Buff



<p> Reverse Drop Brush at 34ft.</p>

Item	3L-7L:18L-18R	8L-12L:18L-18R	13L-17L:18L-18R	18L-18R:17R-13R	18L-18R:12R-8R	18L-18R:7R-3R
Description	Outside Track:Middle	Middle Track:Middle	Inside Track:Middle	Middle: Inside Track	Middle:Middle Track	Middle:Outside Track
Track Zone Ratio	7.67	2.45	1.02	1.02	2.45	7.67

