

Doubles



Oil Pattern Distance:	41 Feet	Reverse Brush Drop:	37 Feet	Oil Per Board:	50 uL
Forward Oil Total:	14.9 mL	Reverse Oil Total:	10.9 mL	Volume Oil Total:	25.8 mL
Forward Boards Crossed:	298 Boards	Reverse Boards Crossed:	218 Boards	Total Boards Crossed:	516 Boards

	Start	Stop	Loads	Speed	Crossed	Start	End	Feet	T.Oil
1	3L	3R	2	18	70	0.0	2.5	2.5	3500
2	8L	8R	2	18	50	2.5	7.6	5.1	2500
3	10L	10R	4	18	84	7.6	17.8	10.2	4200
4	12L	12R	3	18	51	17.8	25.4	7.6	2550
5	13L	13R	2	22	30	25.4	31.6	6.2	1500
6	14L	14R	1	22	13	31.6	34.7	3.1	650
7	2L	2R	0	22	0	34.7	36.0	1.3	0
8	2L	2R	0	26	0	36.0	41.0	5.0	0

Conditioner:
Type In or Select One

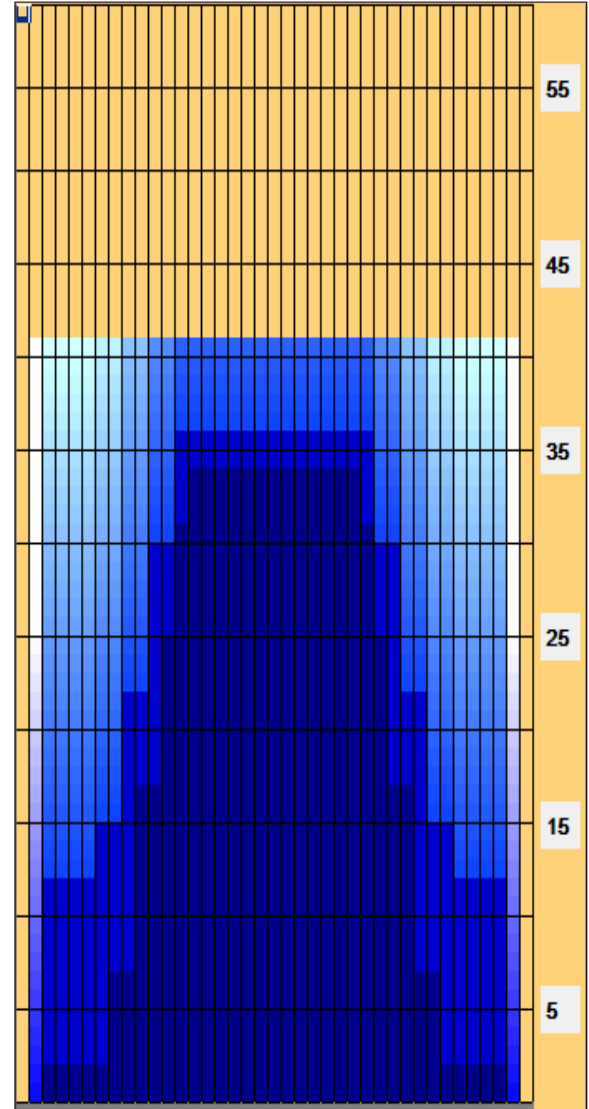
TransferType:
Type In or Select One

Forward
Reverse
Combined
Buff

Forward Reverse More

	Start	Stop	Loads	Speed	Crossed	Start	End	Feet	T.Oil
1	2L	2R	0	30	0	41.0	36.0	-5.0	0
2	13L	13R	2	22	30	36.0	29.8	-6.2	1500
3	11L	11R	3	18	57	29.8	22.2	-7.6	2850
4	9L	9R	3	18	69	22.2	14.6	-7.6	3450
5	7L	7R	1	18	27	14.6	12.1	-2.5	1350
6	3L	3R	1	14	35	12.1	10.2	-1.9	1750
7	2L	2R	0	14	0	10.2	0.0	-10.2	0

Forward Reverse More



This Pattern Up Loaded From Slot # 2 In Lane Machine On 20/07/2020 12:09

Item	3L-7L:18L-18R	8L-12L:18L-18R	13L-17L:18L-18R	18L-18R:17R-13R	18L-18R:12R-8R	18L-18R:7R-3R
Description	Outside Track:Middle	Middle Track:Middle	Inside Track:Middle	Middle:Inside Track	Middle:Middle Track	Middle:Outside Track
Track Zone Ratio	7.5	1.9	1.01	1.01	1.9	7.5

